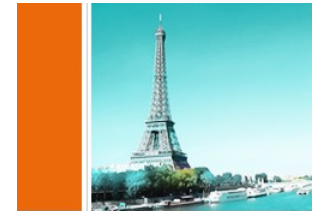




# Télécom Paris



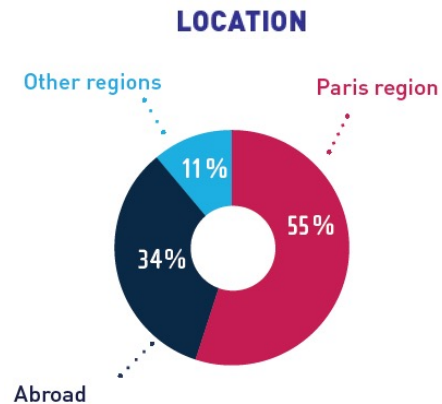
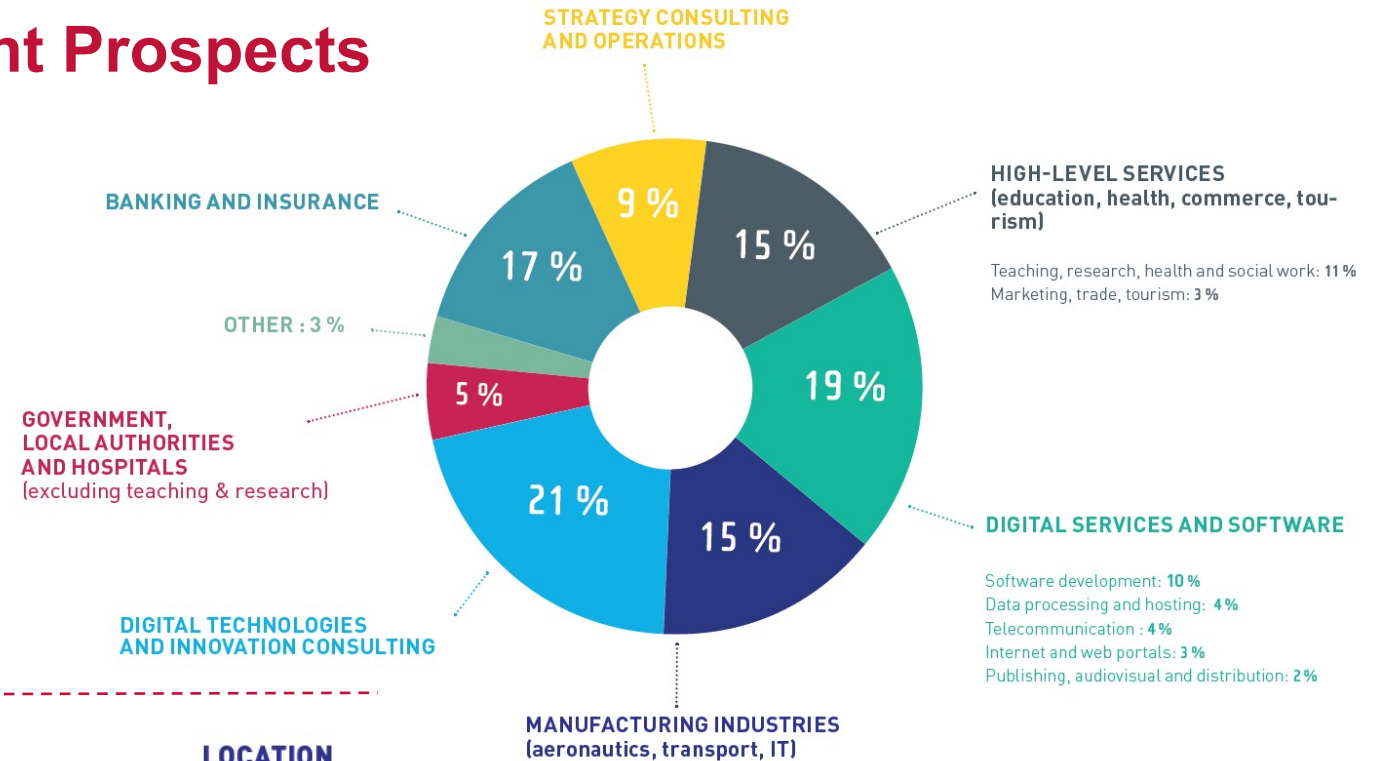
Double degree in Engineering  
Exchange possibilities

Innovating in a digital world



# Excellent Employment Prospects

**97%** of graduates are employed **within 3 months** of graduation.



**51,400 €**  
Average annual gross salary with bonuses

## French rankings

- 1<sup>st</sup> School in Digital Technology (Le Figaro 2020)
- 2<sup>nd</sup> French engineering School (L'Etudiant 2021)
- 1<sup>st</sup> in internationalization (L'Etudiant 2021)
- 1<sup>st</sup> in proximity with companies (L'Etudiant 2021)

Source: 2020 1<sup>st</sup> Job Survey of the last 3 graduating classes

# A Founding Member of Institut Polytechnique de Paris



## ■ 8,500 students in 2020

- 95% of students find a job in less than 4 months after graduation
- 900 PhD students
- 230 post-doctoral students

## ■ 1,000 permanent research-professors

## ■ 30 laboratories

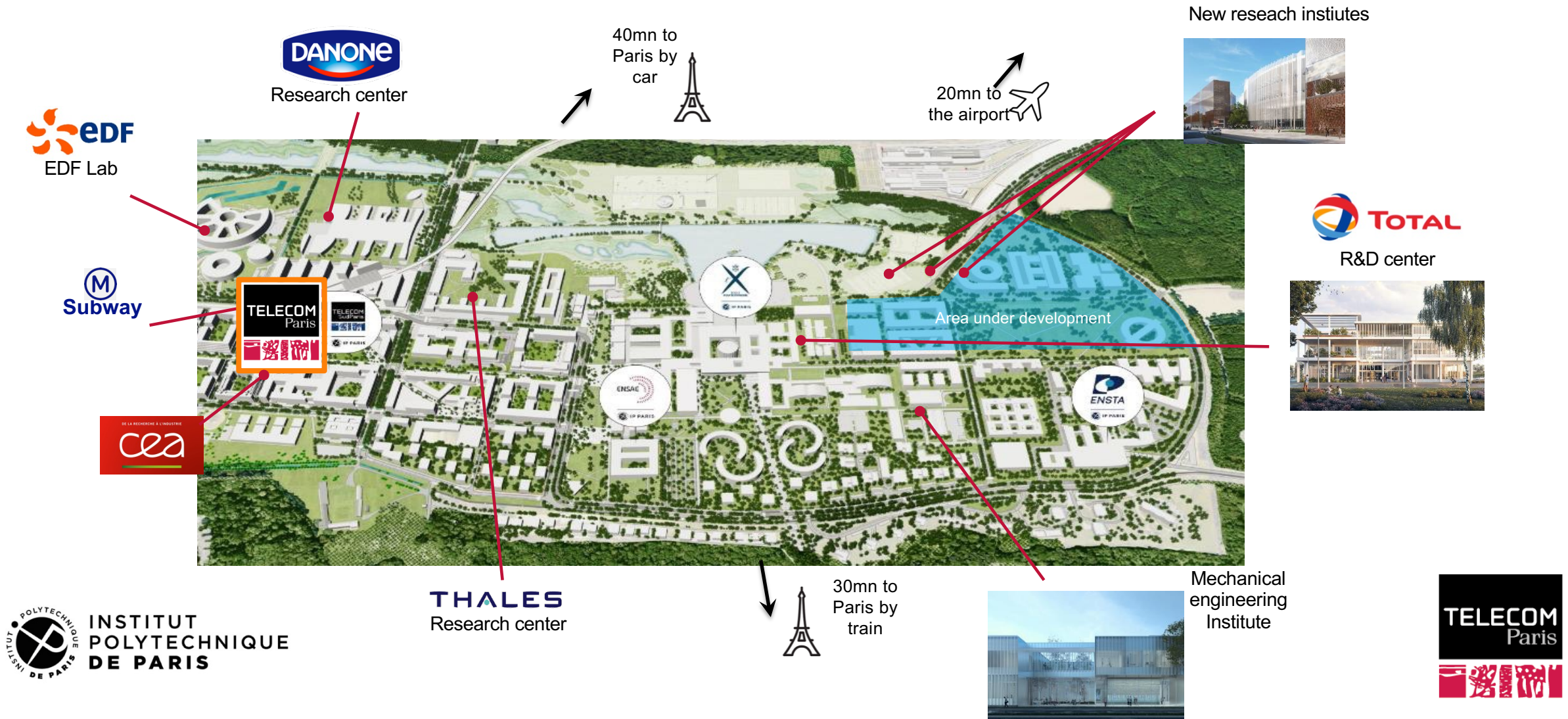
## ■ 2 interdisciplinary centers

- E4C - Center of Energy for Climate
- Hi Paris! - Center of Artificial Intelligence & Data Analysis

### Degrees:

- *Masters*
- *PhD*
- *PhD-tracks*

# A Campus in a Scientific & Research Ecosystem



# 14 Study Fields (2 Choices) – Year 2 – Diplôme MASTER

## AI & Data Sciences



Data Science (SD)



Signal Processing for Artificial Intelligence (TSIA)



Image (IMA)

## Mathematics & Computer Sciences



Stochastic processes and scientific computing (MACS)

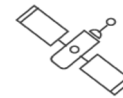


Applied algebra, Cryptography, Quantum information, Coding theory (ACCQ)



Mathematics, Theoretical Computer Science & Operation Research (MITRO)

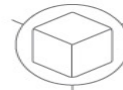
## Computer Systems, Interactive and Embedded



Embedded Systems (SE)



Distributed Software Systems (SLR)



3D & Interactive systems (IGR)

## Networks, Communications & Cybersecurity



Large Digital Infrastructure (GIN)



Infrastructures and Networks Security (SR2I)



Wireless networks and IoT (RIO)



Telecommunications: data to systems (TELECOM)

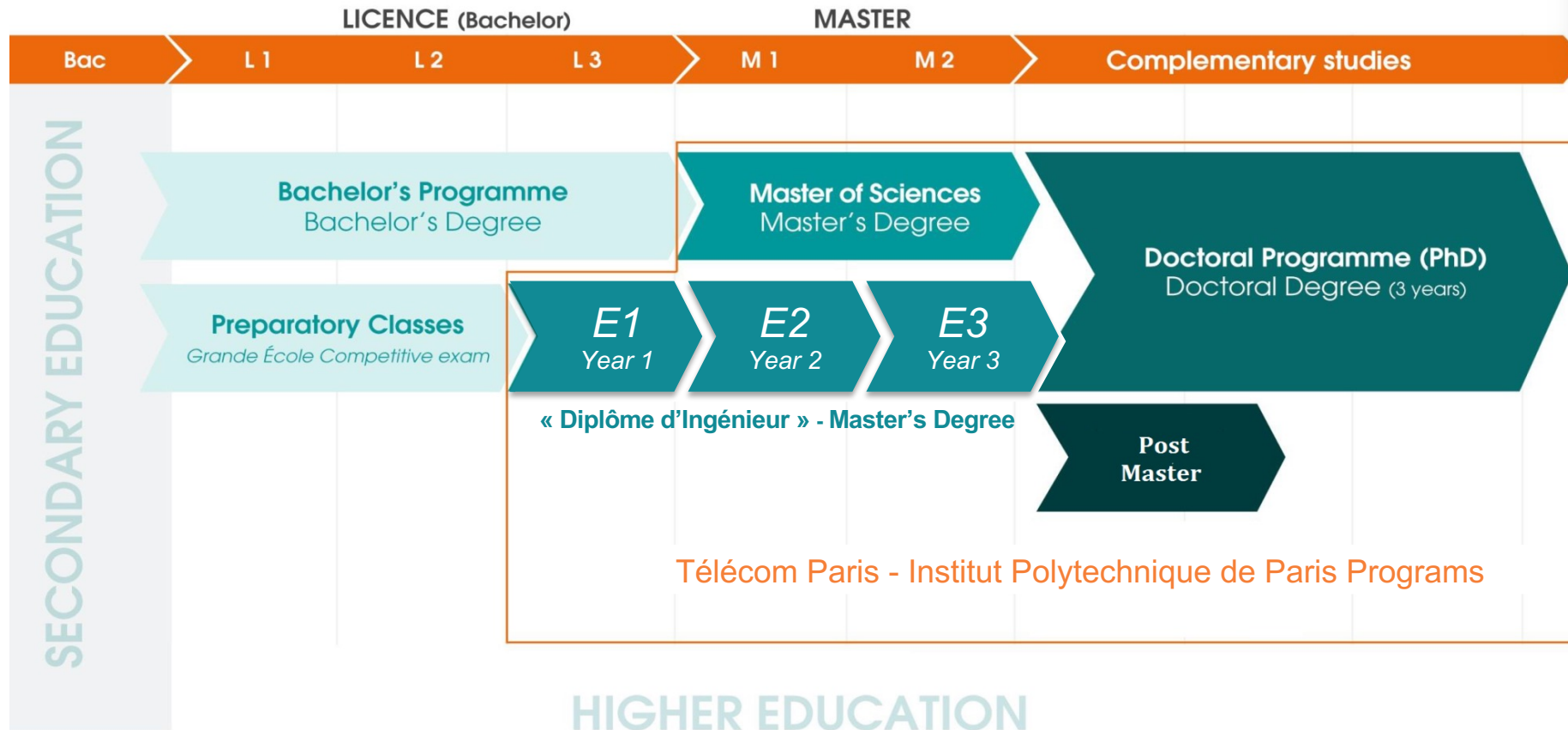
## Economics & Digital Innovation



Markets, Organization, Data, Strategies (MODS)



# When Do You Enter the Curriculum?





## Dual degree program

- 2 years (Y2 and Y3 of MSc in engineering program)
  
- For PUC-Rio students:
  - Engenharia da Computação
  - Engenharia de Controle e Automação
  - Engenharia Elétrica
  - Ciência da computação
  - Matemática
  
- Application after at least 5 successful semesters of *graduação*
  
- Entering after successful selection and at least 7 semesters of *graduação*

# Admission Calendar

- **On-line application: before September 30**
- **Shortlist of applicants – eligibility/admissibility: October 8**
- **Motivation interview/scientific interview: October 18 – November 5**
- **Decision of admission: Mid-November**



# Need more information?

## ■ Visit us

- [www.telecom-paris.fr](http://www.telecom-paris.fr)
- Facebook, Twitter, YouTube

## ■ Contact us

- Information: [international@telecom-paris.fr](mailto:international@telecom-paris.fr)
- Enrolments: [incoming@telecom-paris.fr](mailto:incoming@telecom-paris.fr)

